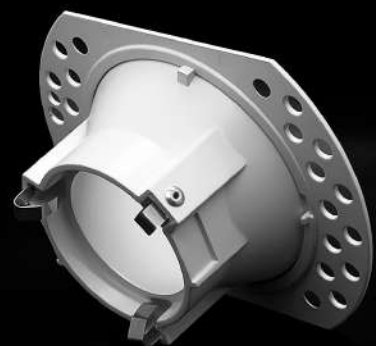




Straight tube



TP01AR1

Trimless Downlight Series



Die-casting
Aluminium

MOQ
100pcs

100%
Source Factory

TP01AR1 - Product information

Trimless anti-glare design | Straight tube

Φ80mm



Anti glare design

Effectively absorbing floodlight,
soft light without glare.

Split design

Easy installation or replacement
of led light source.

Model	Type	Latch type	Cutting	Diameter of cover
TP01AR1	Fixed	Front	Φ80mm	90*120mm

Radiator Mountable



7W



11W

Standard Colour



Matt Black



Matt White



Sand White



Sand Black